

PART 1: Whangārei Future Development Strategy

PART 2: Climate Change Adaptation

Future growth needs over the next 30 years
TERENGA PARĀOA MARAE

Monday September 11th, 2023



Agenda

Recap from last hui – 4th September

Position Statement and Future Development Strategy Working Group endorsements

Seek direction on preferred engagement approach for the Future Development Strategy

Better Off Funding - Climate Change Adaptation Strategy Priority Actions

Summary from last hui

Governance

1. Want clarity on the layers and scenarios hapū can influence for the FDS and ensure it has weighting to achieve the outcomes tangata whenua are seeking.
2. Would like to endorse Nicki Wakefield and Sandra Hawken as tangata whenua representation through Te Kārearea on the Future Development Strategy Working Group.
3. Would like to endorse Mira Norris and Ripeka Reid as tangata whenua representation through TTMAC on the Future Development Strategy Working Group.

Future Development Strategy (FDS) Kōrero

1. FDS to draw a line in the sand for new greenfield development to ensure that intensification happens within the urban area and urban sprawl does not occur.
2. FDS to provide a level of strategic certainty for future planning and infrastructure investment timings.
3. Can the FDS undo the current zoning? For example, Future Urban Zone.
4. Public transport should provide for urban areas to access coastal areas.



Position Statement and Future Development Strategy Working Group endorsements

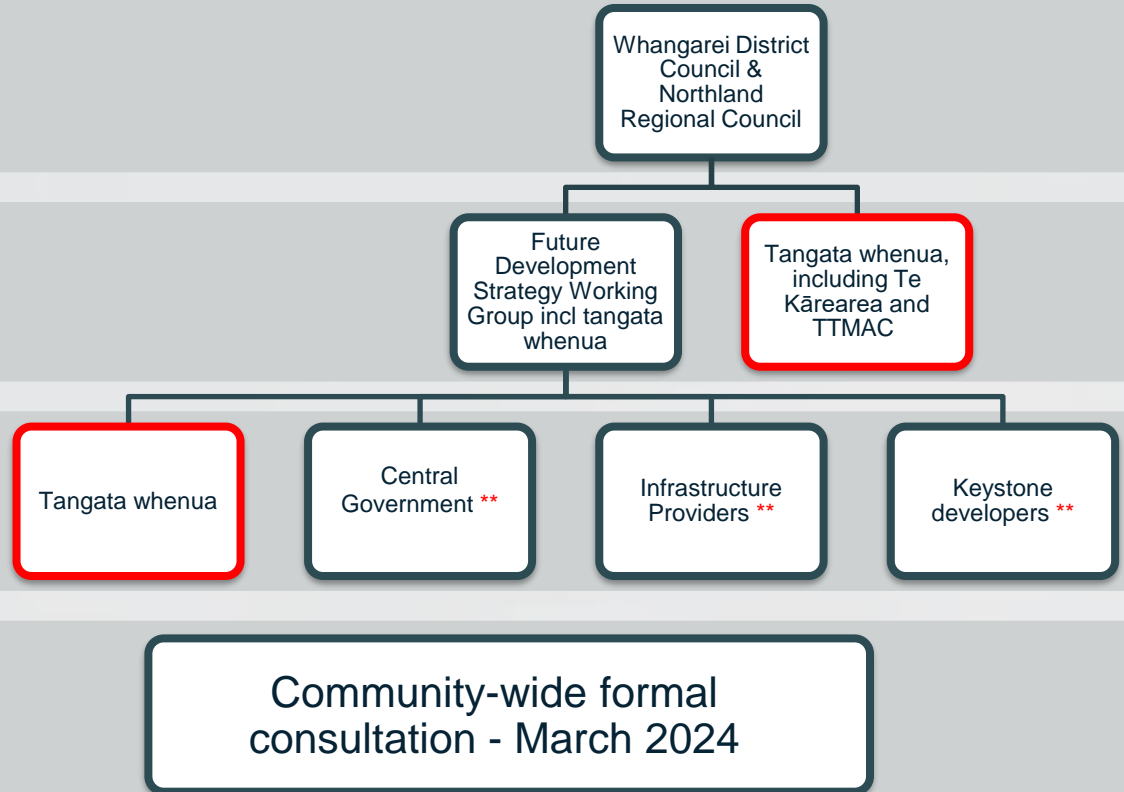
Governance and Engagement Structure

Decision making

Governance Level Direction Setting

Targeted engagement

Formal consultation




The project team acknowledge tangata whenua members who agreed to be part of the FDS Working Group.

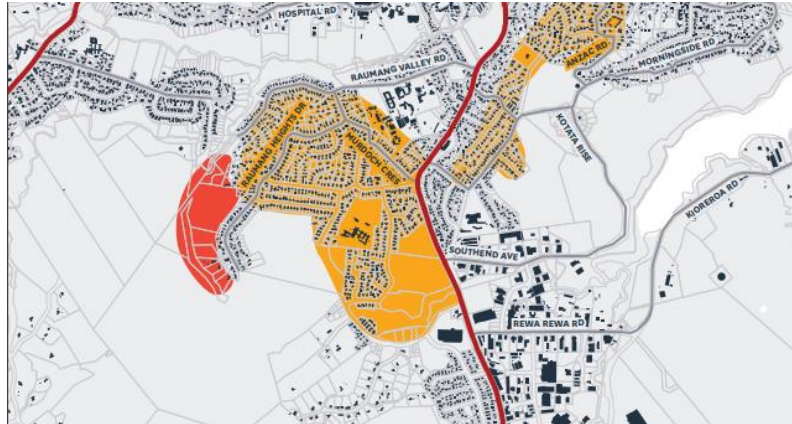
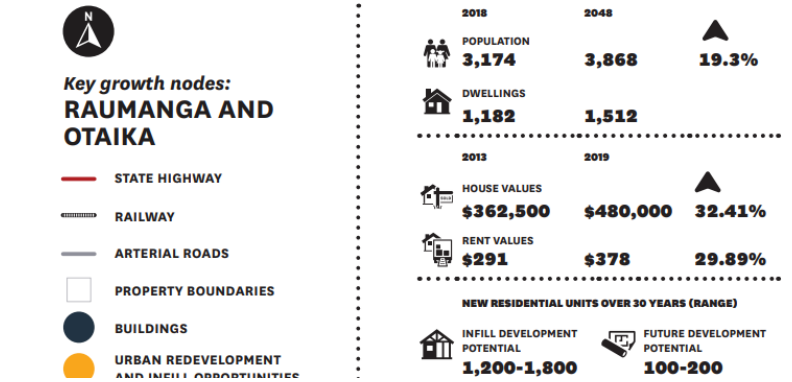
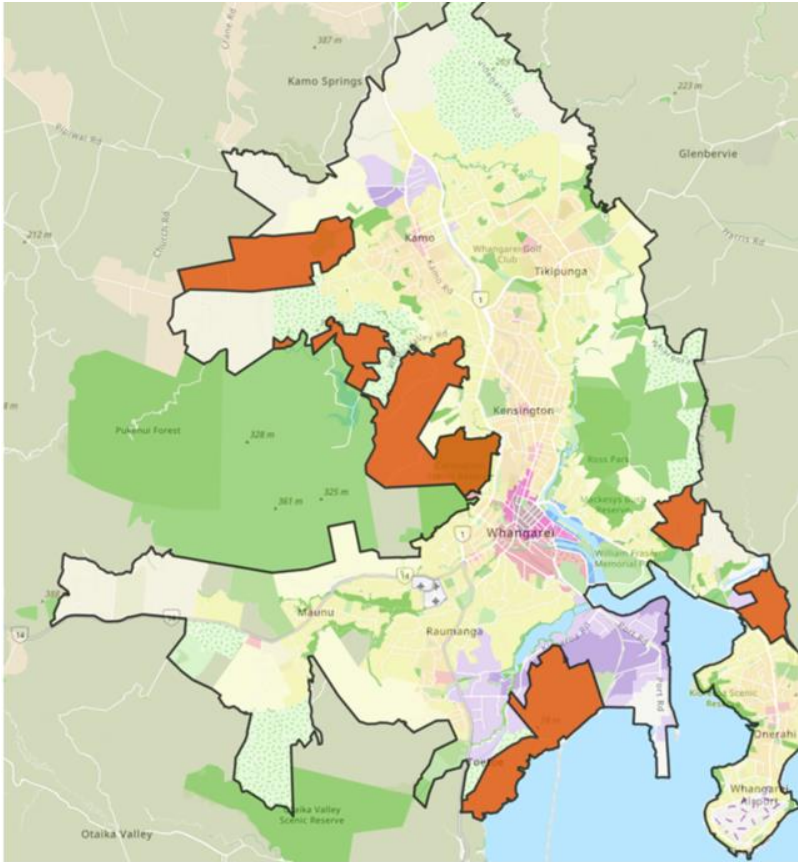
The project team seek endorsement from the hui of tangata whenua members of the FDS Working Group

1. Mira Norris
2. Nicki Wakefield
3. Ripeka Reid
4. Sandra Hawken

Position Statement – collectively draft.

A grayscale landscape photograph showing a valley with a town, viewed from a hillside. The foreground is dominated by large, feathery ferns. The middle ground shows a dense residential area with many small buildings. The background features rolling hills under a cloudy sky. A dark rectangular box is overlaid on the image, containing white text.

Seek direction on preferred engagement approach for the Future Development Strategy

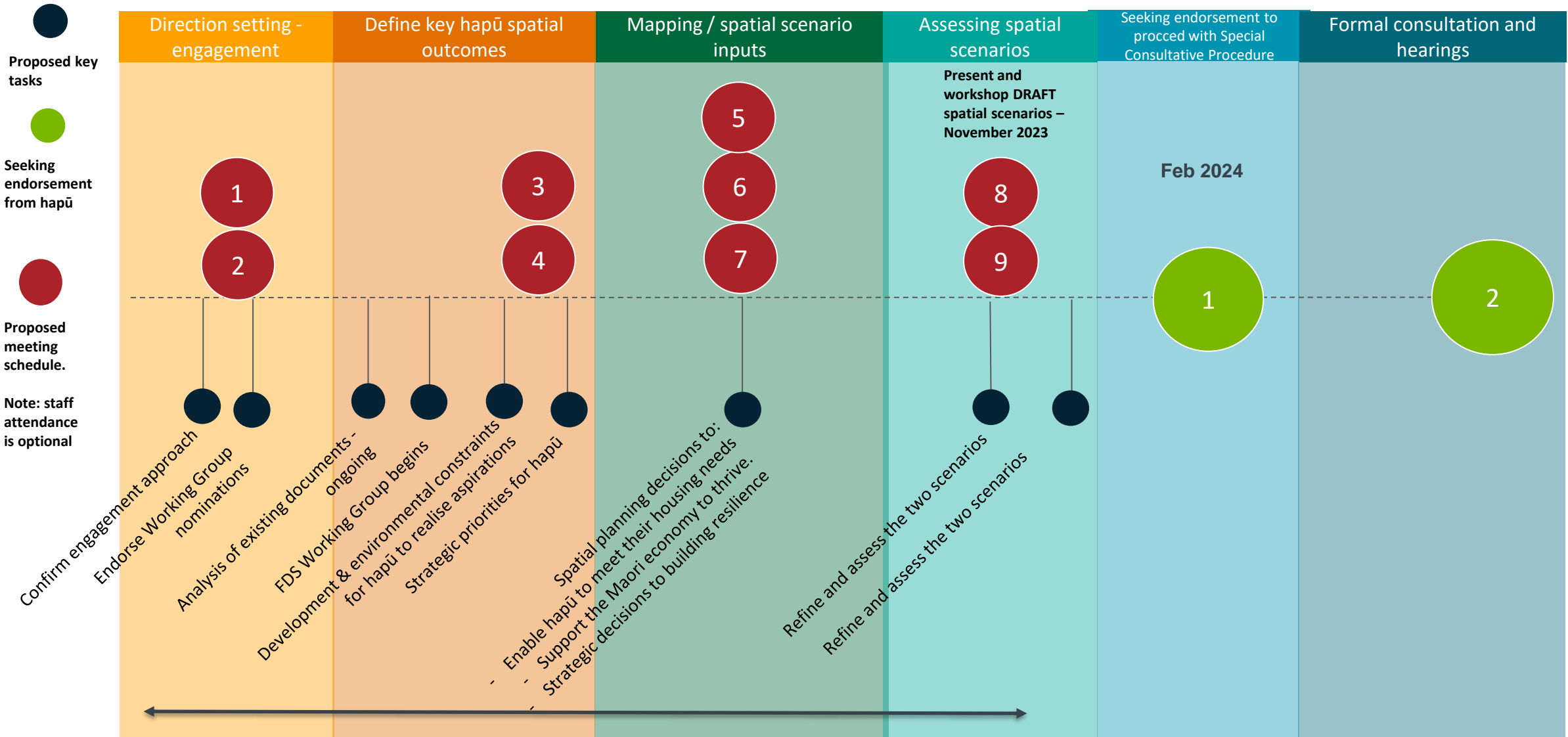


Key infrastructure growth projects to support development capacity (Years 1-10)



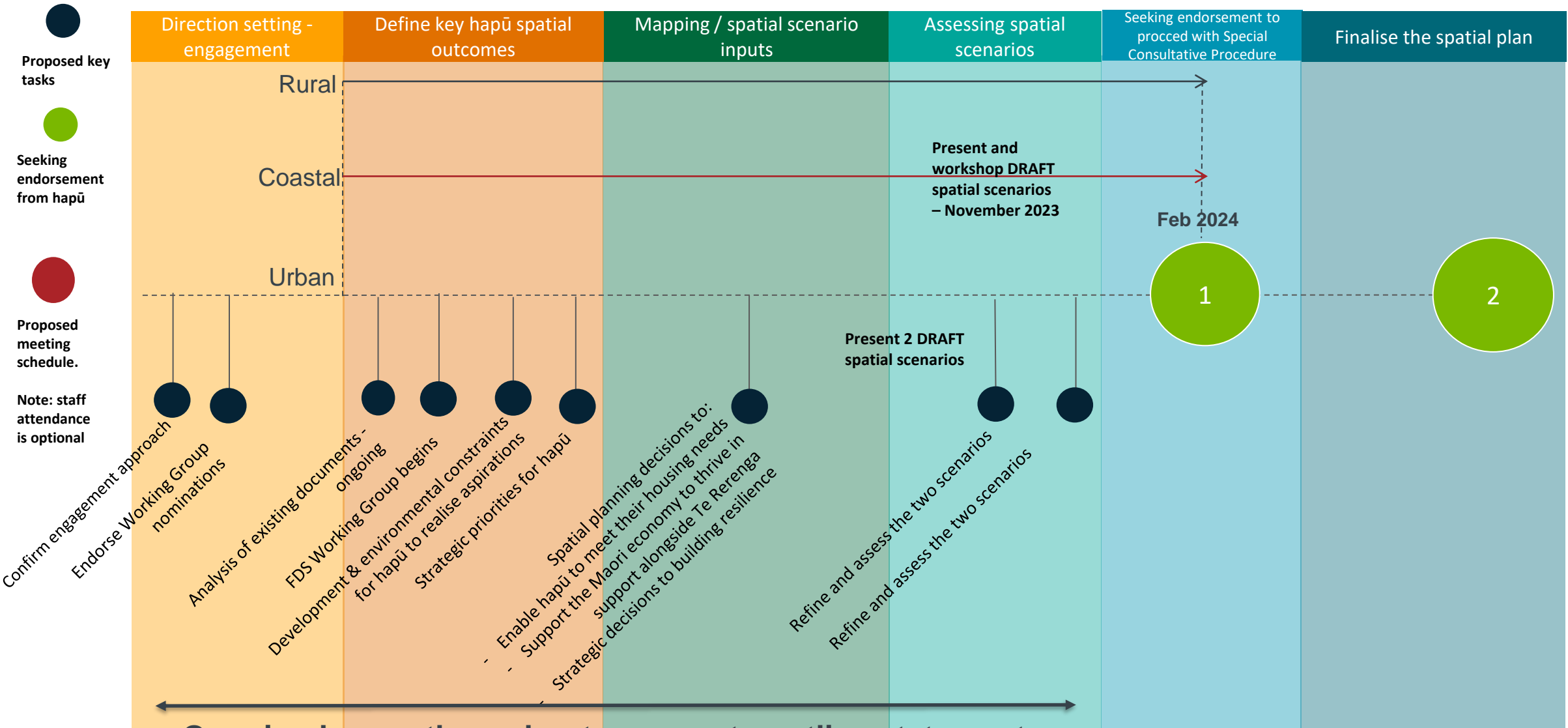
What does spatial planning look like?

Option 1 – Collective approach: Overview of Proposed Scope of Works and Timing



Ongoing korero throughout process to outline statement of hapū development aspirations in Whangarei rohe

Option 2 – Area approach: Overview of Proposed Scope of Works and Timing



Proposed key tasks

Seeking endorsement from hapū

Proposed meeting schedule.

Note: staff attendance is optional

Ongoing korero throughout process to outline statement of hapū development aspirations in Whangarei rohe

Engagement structure

Number of hui

- TBC pending engagement approach agreed to in hui.

Location

- Can be different locations / times of day.
- Can be central or can rotate across the rohe
- Seeking direction from hapū

Resourcing

- Staff need clarity on engagement approach sought.
- FDS hui will be resourced.
- Incl hui & developing aspirations statements & mapping.
- Limited budget

Representation

- Staff attendance / role in meeting can be determined by hapū

***Better Off Funding
Climate Change Adaptation Strategy
Priority Actions***

11 September 2023
Terenga Paraoa Marae

What is the Better Off Funding?

Through the Department of Internal Affairs (DIA), the fund is to support Councils transition to their post-Affordable Waters roles

Whangārei has 10 approved programmes/projects and activities that must be completed by 30 June 2027

Project or Programme	Tranche 1 Allocated	Summarised Approved Use of Funds
LandSaR Base	\$0.15M	Fund a variation to the existing design and build contract for the extension, and ancillary fit out of other services for this not-for-profit community service
Ruakākā Rec Centre Stg 1	\$0.80M	Final funding portion to complete Stage 1 as a grant to the community <u>organisation</u> who is delivering this project
Whangarei Heads VFS Building	\$0.15M	Funding to assist with building alterations which meet community readiness and resilience, to accommodate and serve the Whangarei Heads community
CitySafe Resourcing	\$0.20M	Additional resourcing to CitySafe to increase their presence and deal with immediate problems in the city <u>centre</u>
Climate Change Actions	\$1.00M	Support unfunded priority actions that will build Whangārei's resilience to climate change and natural hazards notably Priority Actions #9, #10, #29, #30, #38, and #39 in the Te Tai Tokerau Climate Change Adaptation Strategy
Papakāinga Support	\$0.30M	Establish a fund to address regulatory costs for owners of Māori land to enable Papakāinga housing on whenua land (e.g., DCs, building and consent fees)
Punaruku Flood Mitigation	\$0.15M	Business case to develop and design flood protection initiatives in Punaruku in partnership with hapū, possibly including alternative access arrangements that respond to long term climate change impacts
Hikurangi Repo Environ. Improvement	\$1.10M	Business case / independent Scoping Study/Options Analysis to identify ways forward to address the effects that land drainage has had within the repo\
Ōakura Sports Park	\$1.0M	Co-funding with Parks & Recreation for the development of a wetland and walkways with earthworks, boardwalks and landscaping, a new carpark and hard court
Māori Wellbeing Fund	\$4.0M	Implementing a trial of a rangatiratanga-based model for hapū. Involves allocating and earmarking funding for areas in alignment with hapū and haukāinga aspirations and needs for investment

Priority Actions

- ***#9 Māori adaptation impact assessment***

Work with tangata whenua to undertake iwi- and hapū-focused risk assessments, including communicating risks from Te Ao Māori perspectives, identifying risks associated with climate hazards, impacts of adaptation responses and limits to Māori adaptive capacity.

This may include direct impacts on cultural values such as waahi tapu; as well as compounding risks, such as interactions between councils and government legislation resulting in unintended consequences, or barriers for Māori adaptation responses.

- ***#10 Iwi/hapū focused adaptation***

Work with tangata whenua to develop a programme to facilitate hapū or iwi -led holistic climate change adaptation plans to integrate multiple climate risks as well as other community objectives. This may include provisions to support iwi/hapū with risk assessments and technical analysis as well as enabling data sovereignty.

Some priority actions listed in the approved scope are already funded or completed

- #29 Embed community adaptation plans
- #30 Coastal adaptation programme
- #38 Joint climate change policy framework
- #39 Policy review and improvement plan

DIA Requirements

- Activities must be completed prior to **30 June 2027**
- Activities must be fully funded and must relate to the actions in the Regional strategy
- \$1.0M can be used with entities representing ngā hapū o Whangārei.
- WDC will receive multiple payments over the 5 year length of the programme, **based on progress milestones and delivery results.**
- Programme milestones and reporting requirements include:
 - Number of Regional Climate change actions implemented through BOF
 - Alternative funding opportunities identified or unlocked by investigations and/or research supported by the programme
 - Number of programme funded groups that include tangata whenua representation
 - Local businesses engaged as a result of the funding

How should the fund be distributed?

- Not all Hapū are at the same place in their climate adaptation journey and have different relationships with Council
- If split, what is equitable? Who decides? Can outcomes be delivered to ensure we get the funding?

Equal vs.



What is the best approach to distribute this funding

